

## Press release

We will hold a special exhibition to

### Visual Magic : Exhibition of Masterpieces from Hokusai Museum, Obuse, Commemorating the 170th Anniversary of Hokusai's Death

on view from 19 November 2019 - 19 January 2020.



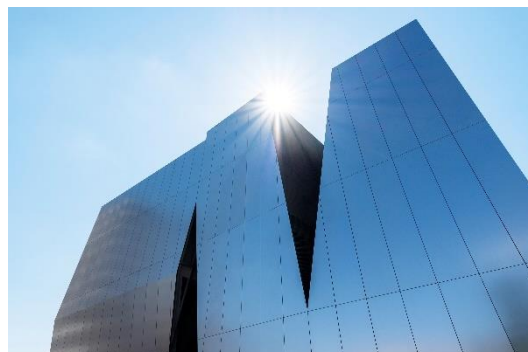
The Sumida Hokusai Museum

### **The exhibition presents a selection of master pieces from the Hokusai Museum, Obuse !**

To commemorate the 170th anniversary of Katsushika Hokusai's death, our museum and the Hokusai Museum, Obuse have joined together to organize a pair of exchange exhibitions. The Hokusai Museum, Obuse is located in Obuse in Nagano Prefecture, a place that Hokusai visited during his later years. This exhibition theme of the Sumida Hokusai Museum is "Visual Magic". It probes the astonishing appeal we find in Hokusai's works when we realize that he does not depict his subjects simply as they are, but manages to add unnatural structural elements, without making the resulting work appear unnatural.



**Hokusai Museum, Obuse**



**The Sumida Hokusai Museum**

**Visual Magic:** Exhibition of Masterpieces from Hokusai Museum, Obuse,  
Commemorating the 170th Anniversary of Hokusai's Death

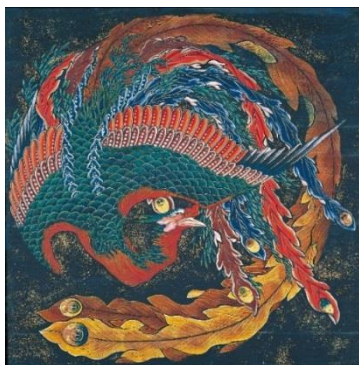
## Exhibition Highlights !

This exhibition is thus a rare opportunity to see nearly 130 works from the Hokusai Museum, Obuse collection on display elsewhere than in that museum. The works on display include brush-drawn paintings from Hokusai's early to his late periods as well as his iconic *Thirty-Six Views of Mount Fuji* and other polychrome woodblock prints. We hope that you will take this opportunity to enjoy them at the Sumida Hokusai Museum in Tokyo.

### Highlight 1. Ceiling Paintings

Hokusai's ceiling paintings for festival floats, large-scale examples of his brush-drawn paintings, are owned by the Higashimachi and Kanmachi neighborhood councils and are on deposit for permanent display at the Hokusai Museum, Obuse. These major works from Hokusai's last years—he is thought to have painted them when he was about eighty-five—decorated the ceilings of floats that processed through the town during festivals. In this exhibition, we display one painting each from the Higashimachi and Kanmachi festival floats, each of which have two ceiling paintings.

#### ◆ Phoenix

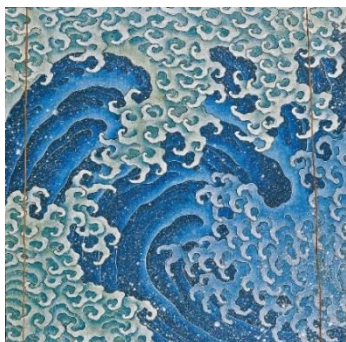


*Phoenix, ceiling painting for a festival float (Higashimachi) (All term)*



*Phoenix, ceiling painting for a festival float (Higashimachi) (detail)*

#### ◆ Masculine Wave



*Masculine Wave, ceiling painting for a festival float (Kanmachi) (All term)*



*Masculine Wave, ceiling painting for a festival float (Kanmachi) (detail)*

**Visual Magic:** Exhibition of Masterpieces from Hokusai Museum, Obuse,  
Commemorating the 170th Anniversary of Hokusai's Death

## Exhibition Highlights !

### Highlight 2. Brush-drawn Paintings

#### ◆ *Brush-Drawn Paintings*

The Hokusai Museum, Obuse, has a substantial collection of Hokusai's brush-drawn paintings, sufficient to earn it the designation "Gakyōjin (Man Mad About Painting) Hokusai's Brush-drawn Painting Museum." It has galleries in which those paintings are on permanent display. The collection includes paintings from Hokusai's Sōri period until his last years, providing a comprehensive view of his artworks.



Left:  
*Salted Salmon and White Mice, from An Album of Brush-Drawn Paintings (2 term)*

Middle:  
*Dragon Above Mount Fuji (1term)*

Right:  
*Woman with Umbrella Under a Willow Tree (2 term)*

#### ◆ *Daily Exorcisms*

Among the many notable works are his *Daily Exorcisms*, paintings of *shishi* (Chinese lion-dogs) that he produced every day as magic spells to cast out his demonic prodigal grandson. They offer particularly valuable insights into Hokusai's life, since we know the context behind his creating them.



*10th day of 10th month (1 term)*

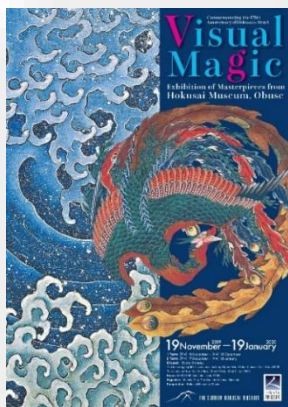


*11th day of 10th month (2 term)*



*13th day of 11th month (2 term)*





## Exhibition Overview

- ◆ **Exhibition title:** Visual Magic: Exhibition of Masterpieces from Hokusai Museum, Obuse, Commemorating the 170th Anniversary of Hokusai's Death
- ◆ **Term :** 19 November 2019 - 19 January 2020
- 1 Term : [Tue] 19 November – [Sun] 15 December
- 2 Term : [Tue] 17 December – [Sun] 19 January
- Hours: 9:30-17:30 (last admission 17:00)
- Closed: Every Monday The following day if it is a national holiday.
- Open: Mon 13 Jan Closed: Tue 14 Jan 2020
- Year end and New Year holidays (Sun 29 Dec- Wed 1 Jan 2020)
- ◆ **Organizer :** Sumida City, The Sumida Hokusai Museum
- ◆ **Cooperation :** Hokusai Museum, Obuse
- ◆ **Contact :** The Sumida Hokusai Museum

## ◆ Admission Fees :

	Adults	H.S / Univ. Students	65 and over	J.H.S Students	Disabled peoples	Elementary school students
Individual	¥1,200	¥900	¥900	¥400	¥400	Free
Group	¥960	¥720	¥720	¥320	¥320	Free

\*Group admission applies to 20 or more paying adults.

\*Students in elementary school and younger are admitted discount of charge

\*Junior high school, high school, and university students (including technical college, vocational school, and special training college students) will be requested to show student ID.

\*Adults 65 and over will be requested to show a document verifying age.

\*Persons with a certificate such as the following plus one accompanying person are admitted free of charge: physical disability, intellectual disability, rehabilitation, mentally handicapped health and welfare, atomic bomb victim health notebook, etc.

(Please show your certificate at time of admission.)

\*Use of these tickets is limited to the day on which the exhibition is visited, and allow you to see all exhibition room

## 【The Sumida Hokusai Museum】

**Hour :** 9:30-17:30 (Last admission 17:00)

**Closed :** Every Monday

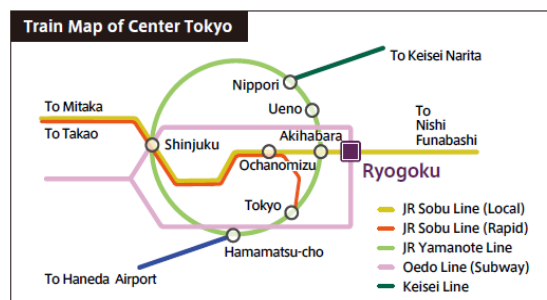
**Address :** 2-7-2 Kamesawa, Sumida-ku, Tokyo, 130-0014, Japan

**Tel :** 03-6658-8936

**web site:** <https://hokusai-museum.jp/obuse/>

**Twitter:** <https://twitter.com/HokusaiMuseum>

**FB:** <https://www.facebook.com/THE.SUMIDA.HOKUSAI.MUSEUM/>

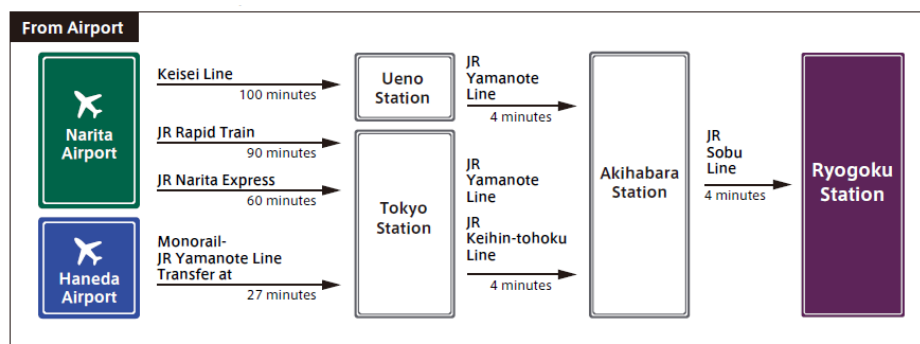


## ◆ Access

\*5-minute walk from the Toei Oedo Line Ryogoku Station

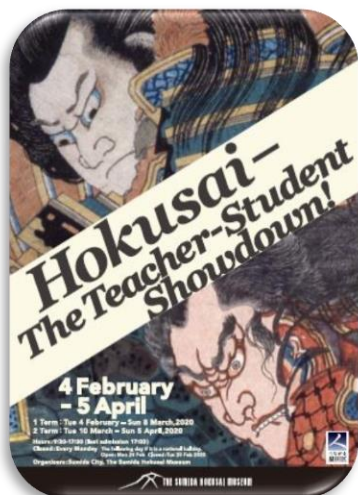
\*9-minute walk from JR Sobu Line Ryogoku Station East exit

\*5-minute by Sumida Loop Bus from the JR Sobu Line Kinshicho Station North exit



## Exhibition Next !

### Hokusai—The Teacher-Student Showdown!



Hokusai is a big name, of course, famed as the iconic Edo-period ukiyo-e artist. Less well known, however, is that he had some 200 students and students of students. Hokusai does not seem to have been the type to coach his students in great detail, but he did draw out their abilities and train many masterly artists. This exhibition presents a selection from the collection to pair works in which Hokusai and his students depicted the same theme. Comparing them, we can explore each artist's style and influences on them. Works by Hokusai and his students are categorized by theme into the four sections of the exhibition: The Human Figure, Landscapes, Animals, and Miscellany. In each, visitors can compare works by Hokusai and his students.

This exhibition does more than present Hokusai's genius. It encourages us to think about these students, searching for their own painting styles in the presence of that great master, and introduces fascinating works by his students that until now had been in his shadow.

#### ◆Term : 4 February - 5 April 2020

1Term : [Tue] 4 February – [Sun] 8 March 2020 / 2Term : [Tue] 10 March – [Sun] 5 April 2020

Hours : 9:30-17:30 (last admission 17:00)

Closed Every Monday The following day if it is a national holiday. Open: Mon 24 Feb, Closed: Tue 25 Feb 2020

◆Organizer : Sumida City, The Sumida Hokusai Museum

#### ◆Admission Fees

	Adults	H.S / Univ. Students	65 and over	J.H.S Students	Disabled peoples	Elementary school students
Individual	¥1,000	¥700	¥700	¥300	¥300	Free
Group	¥800	¥560	¥560	¥240	¥240	Free

\*Group admission applies to 20 or more paying adults.\*Students in elementary school and younger are admitted discount of charge\*Junior high school, high school, and university students (including technical college, vocational school, and special training college students) will be requested to show student ID.\*Adults 65 and over will be requested to show a document verifying age.\*Persons with a certificate such as the following plus one accompanying person are admitted free of charge: physical disability, intellectual disability, rehabilitation, mentally handicapped health and welfare, atomic bomb victim health notebook, etc. (Please show your certificate at time of admission.)\*Use of these tickets is limited to the day on which the exhibition is visited, and allow you to see all exhibition room.



---

Contact us

**The Sumida Hokusai Museum**

Public relation promotion group

2-7-2 Kamezawa, Sumida-ku, Tokyo

TEL : 03-6658-8991 FAX : 03-6658-8992

E-Mail : [hm-pr@hokusai-museum.jp](mailto:hm-pr@hokusai-museum.jp)

Official web site : <https://hokusai-museum.jp/obuse/>

---

**Visual Magic:** Exhibition of Masterpieces from Hokusai Museum, Obuse,  
Commemorating the 170th Anniversary of Hokusai's Death